



Stige Island, a landscape with potential



Fonnæsbyk Churchyard, Ikast DK

PRESENTATION

COMPANY:

Preben Skaarup, Landscape architect, MAA, MDL, PLR.

INFORMATION ON THE DRAWING OFFICE:

The drawing office was established as an independent company in 1984. We take on all kinds of landscaping work. In this way we have built up a broad and solid basis of experience in all aspects of landscape architecture.

For the most part, we have received work by taking part in competitions, either on our own or in collaboration with the best of Denmark's architect companies. Twenty years of participation in competitions has led to a large number of prizes and a lot of work. The jobs carried out have been in all parts of Denmark, but also in Sweden, Finland, the UK, and Germany.

Much of our work has been done in close collaboration with architects and engineers, and we know how to make such collaboration work smoothly.

Our work covers a very broad spectrum of all kinds of projects. We have done practically everything in the field of landscape architecture – city development, landscape design, town centre planning, recreational area renovation, motorways, cemeteries, town parks, etc. Our aim is to complete every job entrusted to us at a high landscape-gardening, architectural and technical level within the financial framework that is laid down.

Twenty years of participation in competitions has led to more than 40 first prizes, many other prizes and purchases – and a lot of completed jobs.

Our projects have been published in Danish and other journals and books – and shown at exhibitions in Denmark and a large number of other countries.

Alongside his work in the drawing office, Preben Skaarup also teaches at Aarhus School of Architecture, in the department for landscape gardening, which he has led for years. This teaching work leads to a combination of theory and practice which is very valuable in the work of the company.

Preben Skaarup has written articles for journals and books on landscape gardening and architecture, and has also given many lectures on the same subjects.

WORKING CAPACITY:

The drawing office currently has 8–10 employees – all architects or landscape architects.

TECHNICAL EQUIPMENT:

We model using AutoCad 2006 and we have a lot of experience in adapting to client requirements and coordinating with engineers and architects. For layout and digital imaging we use Adobe's Design package.

The drawing office has 8 workstations linked in a network with server and printers.

QUALITY ASSURANCE:

Our quality assurance system is based on current norms and requirements. It is also continuously maintained and updated so as to live up to the highest possible standards.

THE ENVIRONMENT:

Concern for the environment is an integrated part of both our daily work and our quality assurance system, in which the evaluation of materials, working procedures, maintenance, durability, demolition and disposal are all important parameters in the design of projects.

ANNUAL TURNOVER, GROSS EARNINGS AND EQUITY:

Accounting year	2002	2003	2004	2005
Total turnover (DKK 1000)	1626	2353	4992	4487
Gross earnings (DKK 1000)	964	1391	2033	1302
Equity (DKK 1000)	1148	550	1521	1283
No. of employees	5	8	7	9

OWNERSHIP:

The drawing office is a privately owned company, with Preben Skaarup as sole owner.

CONTACT INFORMATION:

Preben Skaarup, Landscape Architect, MAA, MDL, PLR.
Graven 3,
DK-8000 Århus C
Tel. (+45) 86 13 56 77
Fax. (+45) 86 13 50 27
landskab@prebenskaarup.dk
www.prebenskaarup.dk

PREBEN SKAARUP

Landscape Architect, MAA, MDL, PLR. Born 27.12.1946 in Esbjerg, Denmark

1974 Graduated from Aarhus School of Architecture, Department for Landscape Gardening.

PROFESSIONAL EXPERIENCE:

1984 – Own landscape architecture company, Graven 3, 8000 Århus C.
1996 – Consultant for the Danish Ministry of Ecclesiastical Affairs in Haderslev Diocese.
1986 – Head of Department for Landscape Gardening at Aarhus School of Architecture.
1982 – Lecturer at Aarhus School of Architecture.
1980 -1982 Editor of the Landscape Architects' Journal, Landskab.
1975 -1982 Employee in Landscape Architect Professor Sven Hansen's Drawing Office.

MEMBERSHIP OF PUBLIC BODIES:

The Academy Council's sub-committee on Landscape Gardening, 2000
The Association of Danish Landscape Architects, member of the board from 1986 – 1990
The Danish Council of Practising Landscape Architects, PLR
ICOMOS, Denmark
Committee of judges for the Agro-Architecture prize in Denmark
Judge in a number of architectural competitions

LECTURES AND WORKSHOPS:

Shape, own projects, Trondheim, Norway, 2006
Private Public Space, Stockholm, Sweden, 2003
École du Paysage, workshop Versailles, France 2005 and 2002
University of Hannover, Institut für Grünplanung und Gartenarchitektur, Germany 2001
Course leader for »Beautiful Roads«, common Further Education courses for engineers and architects in collaboration with the Danish Road Directorate. 1997 – 2001
Aalborg University 2000, 2001
Invited workshop with artists, architects and landscape architects, the Danish Arts Agency, Vejle 1998

EXHIBITIONS:

Harvard University GSD – USA, Contemporary European Landscape Design 2001
European Biennial on Landscape, Barcelona, Spain 1999
Danish Landscape Architecture, Copenhagen 1999
Køge Collection of Drafts 1994

COMPETITIONS:

2005 Kongens Have – in Odense	2nd prize
2005 Stige Island – Odense Fjord	1st prize
2005 Skovgårdsparken, Renovation of grounds	Invited 1st prize
2004 Varde – Town and River	Invited 1st prize
2004 Sommervej, Residential plan for large plot	Invited shared 2nd prize
2003 Roskilde University	Invited 1st prize
2002 Education Centre North-West Zealand, Thisted	Invited 1st prize
2001 Randersvej, street renovation, Viborg	Invited 1st prize
2000 Skive Barracks – Administration building	Invited 1st prize
1999 Trekroner Homes for Young People, residential plan	1st prize
1999 Viborg School of Music	Invited 1st prize
1999 Overall plan for new district at Trekroner in Roskilde	1st prize
1999 Block of flats, Helsinki	International 1st prize
1999 Jærgårdens School, Administration building, Århus	Invited 1st prize
1998 Toftebo-Centre, Homes for the Elderly, Hammerum	1st prize
1998 Wuhlepark, Landsberger Tor, Berlin	International 1st Einkauf
1998 Tactical Air Command, Karup	Invited 1st prize
1998 VUC, Education Centre, Hjørring Gymnasium	1st prize
1997 Aarhus Athletics Ground, new stadium and hall	Public 4th prize
1997 Wind Energy and Environmental Research, Risø	1st prize
1996 Culture house and town park, Ledøje-Smørum	Invited 1st prize
1996 Homes for the Elderly and a Centre, Hindhøj in Hinnerup	Invited 1st prize
1996 Organic Homes 99	Invited 1st prize
1996 Business college, Aalborg harbour	Invited 1st prize
1996 Oceanarium in Hirtshals	Invited 1st prize
1996 Centre for the Elderly, Kristianslyst, Thisted	Invited 1st prize
1996 Extension of Residential Area, Soluret, Odense.	Invited 1st prize
1995 Technical College in Aalborg	Invited 1st prize
1995 Orion, homes and centre for the mentally ill, Hillerød	1st prize
1995 Technical School in Hjørring	Invited Best project
1995 Glass Museum in Ebeltoft, Danish Arts Agency	Invited 1st prize
1995 Traffic Reorganisation and urban space in Børkop	Invited 1st prize
1994 Town fixtures for Vejle Local Authority.	Invited 1st prize
1994 Plan for surroundings of Vestervig Church	Invited 1st prize
1992 Ribe Byferie. Holiday homes in Ribe.	Public 1st prize
1992 Holiday homes in Kolding town centre	Public 2nd prize
1991 New town park in Vejle	Invited 1st prize
1987 The Danish Institute for Life Insurance	Invited 1st prize
1987 Blangstedgård, 35 homes in SE Odense	Invited 1st prize
1986 Telecentre, Fyn	Invited 1st prize
1985 Music House in Reykjavik, Iceland	Scandinavian 3rd prize
1983 Otterup Library.	Invited 1st prize
1982 Music House in Næstved	Invited 1st prize
1976 Town Hall area in Odense. Improving urban space	Public 1st prize
1972 Residential plan in Hanstholm	Public 2nd prize
1971 Centre plan for Hvide Sande	Invited 1st prize
1970 Ringkjøbing's Future	Public 1st prize



PROJECT DATA:

Project: Local park
Type of project: Invited competition
Location: NW district of Copenhagen
Clients: Collaboration between Kvarterløft Nordvest, the City of Copenhagen and the Kay Wilhelmsen Group
Landscape architects: Preben Skaarup Landskab
Schedule: the proposal was drafted in 2006



KVARTERLØFT NORDVEST, PARK IN COPENHAGEN

The competition concerned a new park which would link three areas in the North-West District.

Hulgårdsplads, Frederikssundsvejen School's playing fields, and the old HT grounds would be used to provide the local neighbourhood and its residents with new facilities and a new image.

The requirement was for a public park that was as green as possible, yet accessible to as many people as possible.

Ambitions for the new Park in North-West District ran high. The park was to be a green space, an assembly point for many activities – and help develop a strong sense of local identity, so that people in the North-West would be proud of their district and their new park.

We wanted to create a park built around a robust and simple design – a park that could easily be changed in collaboration with the residents in the planning phase, and which after completion would allow involved residents to create continuous improvements and renewal in the park, so that it would not risk sinking into a state of standstill or dilapidation once the novelty wears off.

So we wanted a robust, green, vibrant and changeable urban park.

An unrefined park, kept vibrant and fresh with continuous change and improvement.

The park is divided into three distinct parts:

The "GARDEN" – romantic with grass, trees and paths across undulating terrain.

The "LAWN" – for athletics, sport, play and ballgames – a multi-functional surface.

The "SQUARE" – an urban square and playground – both park and square.

Taken together, the park forms a rich and varied whole.

Walking around the park will offer different experiences in each part, which will make it seem much bigger than it really is.





PROJECT DATA:

Project:	Stige Island
Type of project:	Landscaping plan for former waste disposal area
Landscape architects:	Preben Skaarup in collaboration with artist Eva Koch
Engineers:	Moe og Brødsgaard
Clients:	City of Odense
Schedule:	Project competition, 1st prize 2005



STIGE ISLAND, A LANDSCAPE WITH POTENTIAL

The potential of Stige Island is enormous; the landscape is young, immature, unstable, indefinite, unfinished. This is where the challenge comes from: to open up and keep available this seemingly infinite range of possibilities – and to add to them without excluding any.

Our strategy will be determined by the desire to maintain the fascinating openness of the area. Stige Island is a landscape in transformation – change and development are characteristic of the island today.

The plan for Stige Island lays down the spatial organisation, the overall programme and the fundamental infrastructure. It has to be simple and clear so as to make it easy to follow the strategy. The plan must also be flexible and open to ongoing amendment and adjustment as requirements change.

There are two aspects to the exploitation of the recreational potential of Stige Island: organised activities and the pleasure of the natural environment. There should be a balance between these two ways of enjoying Stige Island, so they are not in conflict, but instead supplement and strengthen each other in positive interaction. So the plan for the exploitation of Stige Island starts by dividing it into two contiguous strips that together serve to connect city and fjord in the context of Odense as a whole.

All existing and new recreational activities will be linked together in a contiguous strip on one side of the island along Odense Canal.

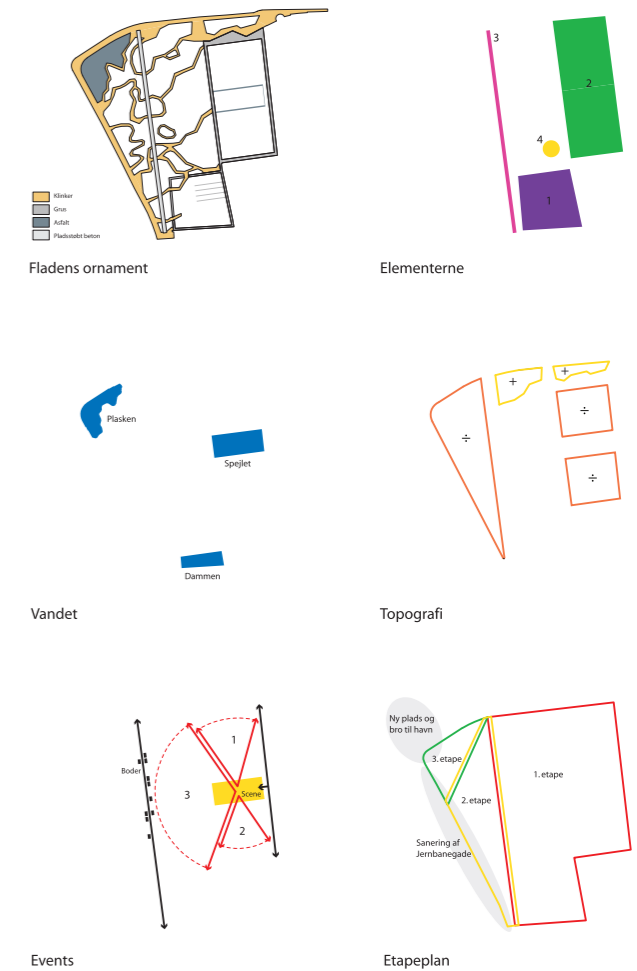
All existing and new possibilities for enjoyment of the environment will be focused on the other side of the island in a contiguous natural habitat strip facing Odense Fjord.





PROJECT DATA:

Project: Kongens Have i Odense
 2nd prize in invited competition
 Organiser: City of Odense in collaboration with the Architects' Association of Denmark
 Schedule: The competition took place in 2006



KONGENS HAVE IN ODENSE

The competition concerned Kongens Have in Odense. The aim of the competition was to come up with innovative proposals for adjusting the use of the park in line with the protection order that had been issued. Proposals for the coherent redesign of secondary areas, immediately adjacent to Kongens Have, were also requested, with a view to ensuring the overall coherence of the area and its connection to the city as a whole.

Among the project's conclusions were the following:
 What is the significance of Kongens Have in relation to the city's other parks?
 The term 'have' ('garden') immediately suggests something finer, more interesting and better looked-after than a park. In many ways, the very name says that Kongens Have must be the most distinguished park in Odense. This means that it has to be a park that tells the city's history – but Kongens Have should also say something about Odense as a city with both respect for its history and the courage to re-interpret it. Kongens Have should be a park with a grip on the past, the present and the future.

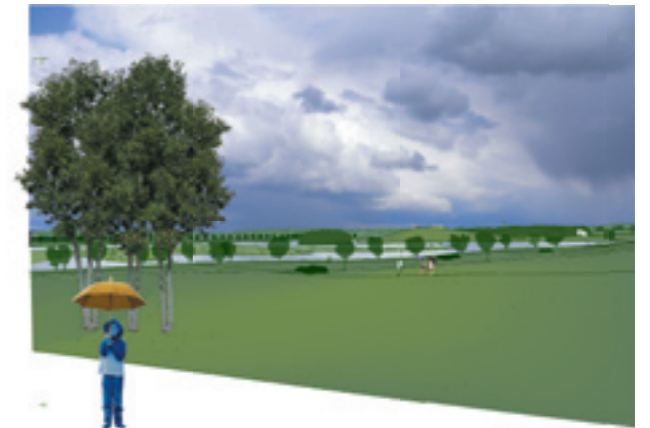
Kongens Have should be:
 – a recreational park – it is a green space in the middle of the city, allowing activity, enjoyment and rest.
 – a transit park – it is right in the middle of the traffic of pedestrians and cyclists going through the city
 – a representative park – for many people, it is their first encounter with Odense – the city's front hall – the place where the first statement about the city is made.





PROJECT DATA

Name of the project: Holing Sø new artificial lake
 Short description: The development of a new artificial lake, combining recreation with a rowing stadium, is now possible thanks to the dredging of large quantities of sand for the new motorways surrounding Herning, a city in mid-Jutland.
 Location: Herning, Denmark
 Designer: Preben Skaarup, Landscape Architect, MAA, MDL
 Commissioned by: Herning City Council
 Area: 4.2 square km
 Period of design: 2003–2004
 Implementation period: 2004–



HOLING LAKE – MASTER PLAN

An international rowing stadium on Holing Lake has long been a vision in Herning.

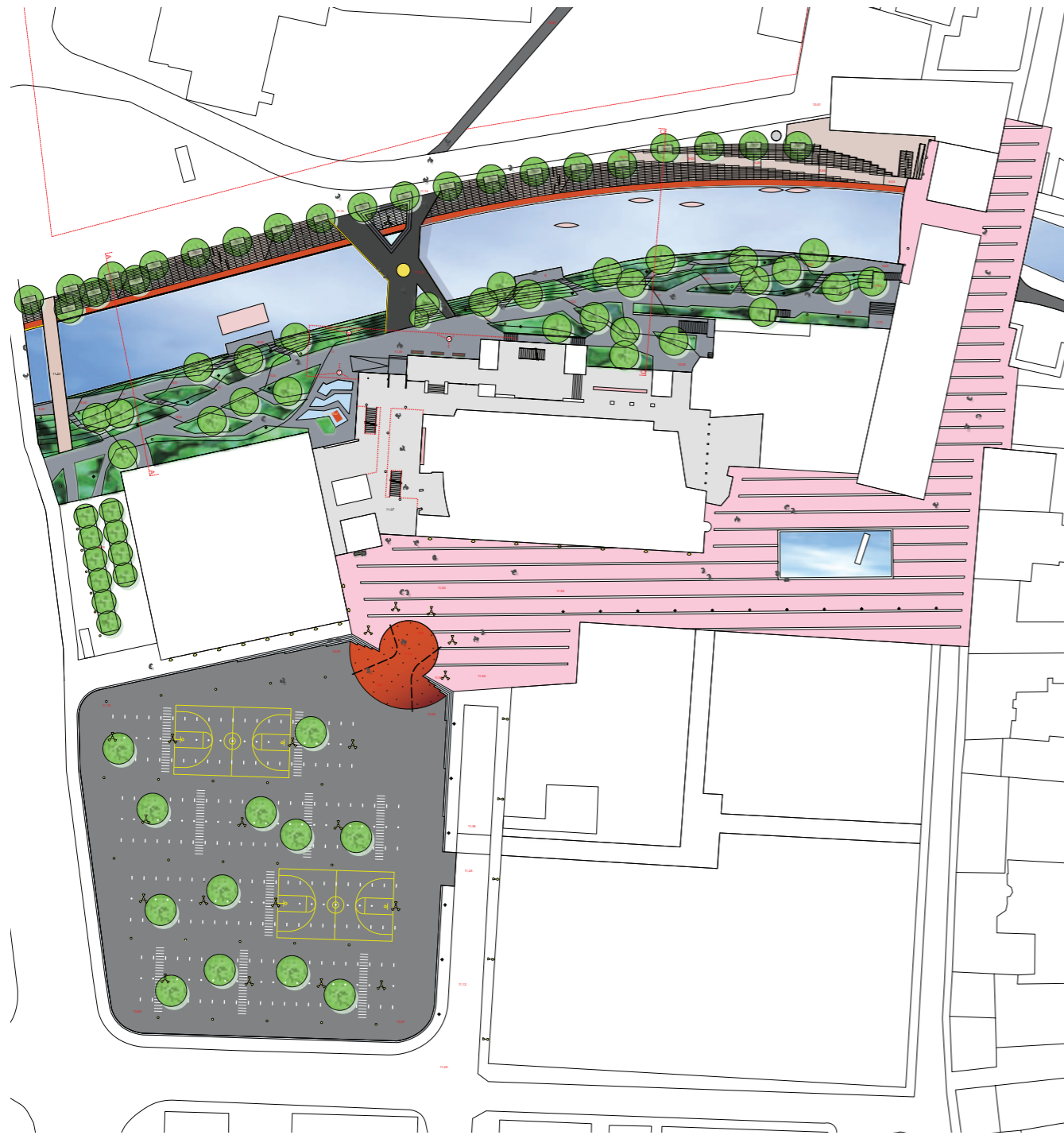
This vision has become a realistic goal due to extensive improvements to the infrastructure in the form of motorways and by-passes around Herning. Since subsoil sand is used for road building, this opens an opportunity to create a large, recreational lake landscape at Gullestrup, north of the town of Herning.

In this connection we were given the job of preparing a master plan for a lake big enough to take a rowing stadium of international dimensions (2000 metres in length), offer recreational diversity, and enable the building of detached houses close to the lakeside.

Our starting point was a lake with three overlapping parts: the rowing lake, the residential lake to the west, and the recreational lake to the east.

The rowing lake makes up the entire southern side of the lake landscape with a striking view along an open row of trees. The residential lake gives the opportunity for houses on the lakeside. The recreational lake forms the framework for outdoor life, a rich birdlife and varied vegetation.

As a distinctive pivotal point in the flat landscape of the lakes, a flat conical hill of surplus soil rises on the bank of the recreational lake.



PROJECT DATA:

Project: Urban space in Holstebro
Invited competition
Organiser: Holstebro Local Authority in collaboration
with Realdania and Kuben building
consultancies
Schedule: the proposal was drafted in 2006



RIVER & CULTURE URBAN SPACE, HOLSTEBRO

The idea of the competition was to come up with proposals for a renovation and transformation of the town's river area from a backwater into a prime area – an active part of the new urban space connecting the northern and southern parts of the town together, helping to create new, attractive urban space around the two important centres of culture, and opening up new possibilities for town life and theatre, music and dance.

Our proposals evoke and strengthen the fundamental contrasts already present in this very composite area. The project creates new transitions and experiences throughout the area, and generates new, active urban space. The project proposes four distinct zones and two strong transitional figures. These transitions are expressed in striking contrasts, which in themselves will give character and bring the background into active interaction with the context.

The river area has been transformed into an active, urban landscape, where people can meet, take a stroll, experience cultural events, or just go shopping in Holstebro.

A new phase in the interplay between town and river begins.



PROJECT DATA:

Project:	Town park in Vejle – Extension	
Client:	Vejle Local Authority	
Cost of project:	In total	DKK 6.51 m.
Schedule:	East completed	January 2006
	West	Autumn 2006



VEJLE TOWN PARK

In 1990, our drawing office won 1st prize in a competition about a new town park in Vejle. The park was subsequently established when Vejle Music Theatre was built in 1992. In 1996, the park was awarded “The Year’s Green Prize”, and pictured in Danish and other books and journals. The park is referred to in Den Store Danske Encyklopædi (the Danish Encyclopaedia) and in Danmarks Havekunst (Landscape gardening) vol. III.

New construction work in the area includes an extension of the park down to Flegmade. The existing park’s motif of a town by a river between forest-clad hills is continued in the new part of the park. There are both grassy hillocks and low-lying mounds with forests of rush, which become islands when the river rises.

The park has also been extended to the west. A footbridge over the river links the eastern to the western part of the park, which is partly private and partly public. The terrain rises before reaching the housing, where there is a roof garden. A gabion mediates the jump between the two levels. A promenade in front of the gabion functions as part of the path the runs beside the river.

The square, which is both the new main entrance to the art museum and a parking area for the hotel, has been transformed into a single entity.

Plans have also been drawn up for a future market place where Flegmade, Flegborg and Enghaveve meet, with a roundabout for the traffic. River water will be drawn up into a pond in the roundabout to visually emphasise the crossing of the river at this point. The market place will find inspiration in the historical Vejle. The intention is to recreate a picture of the flat landscape, the marsh and the meadows. This was the town boundary 250 years ago: the border between town and meadow.



